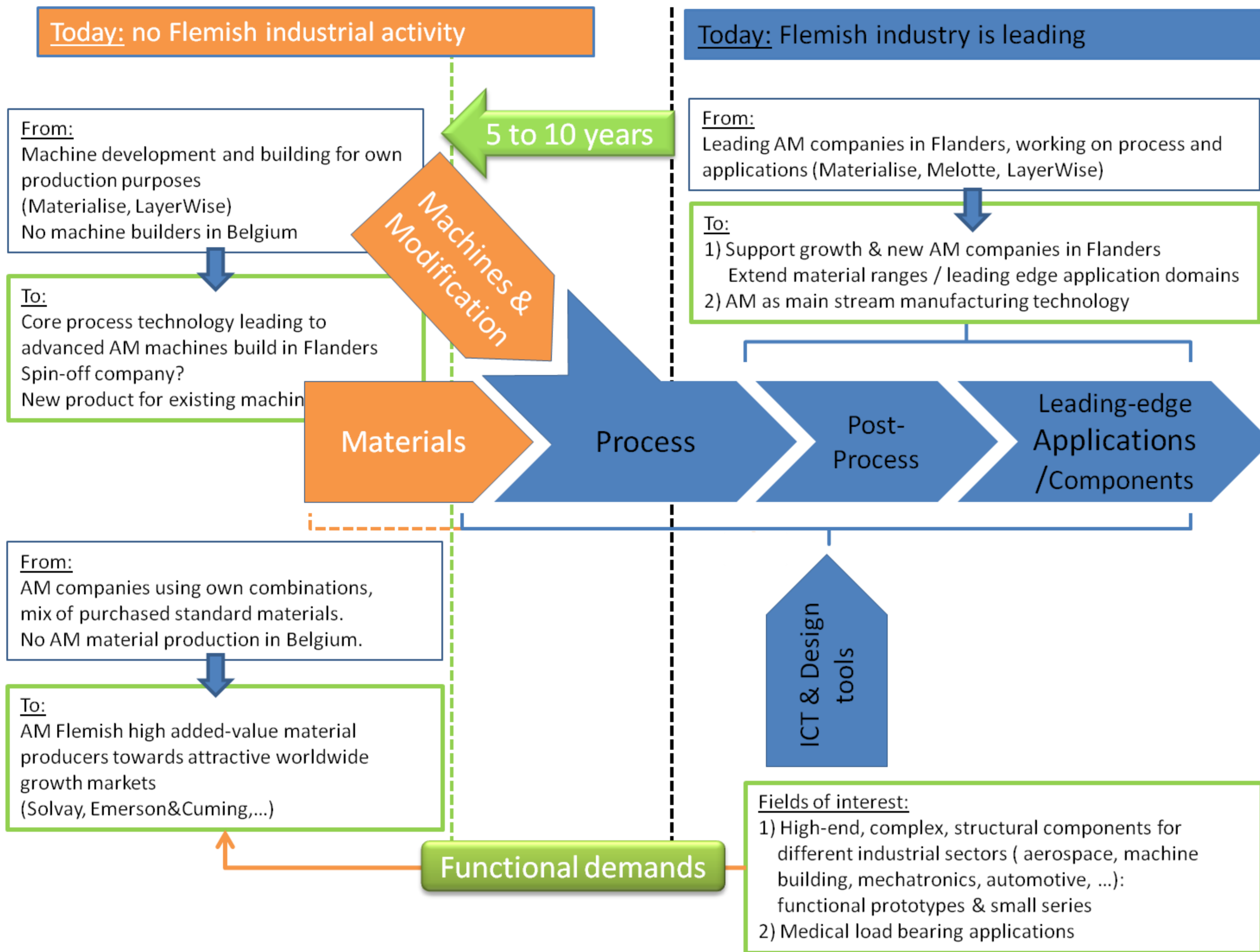
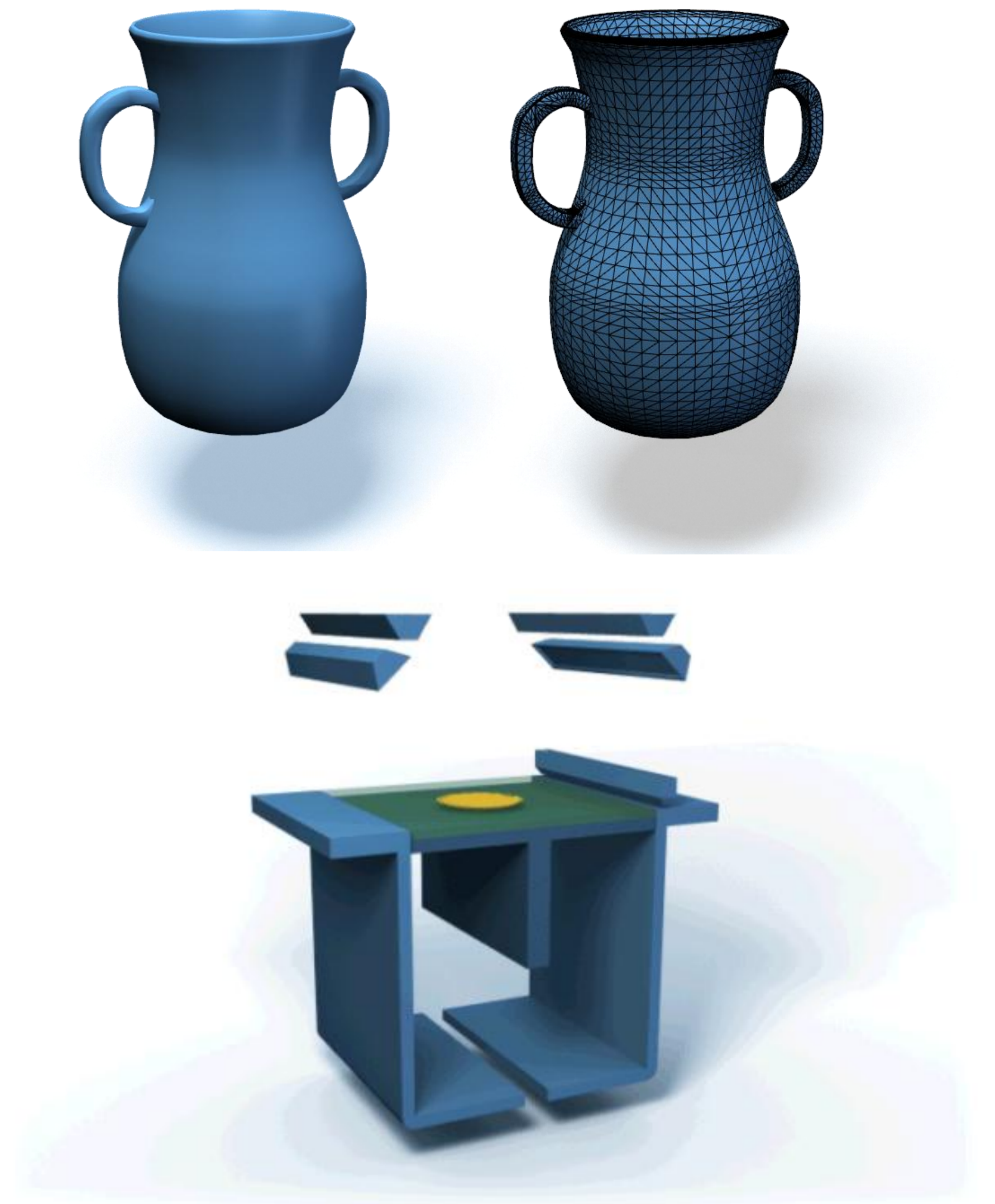


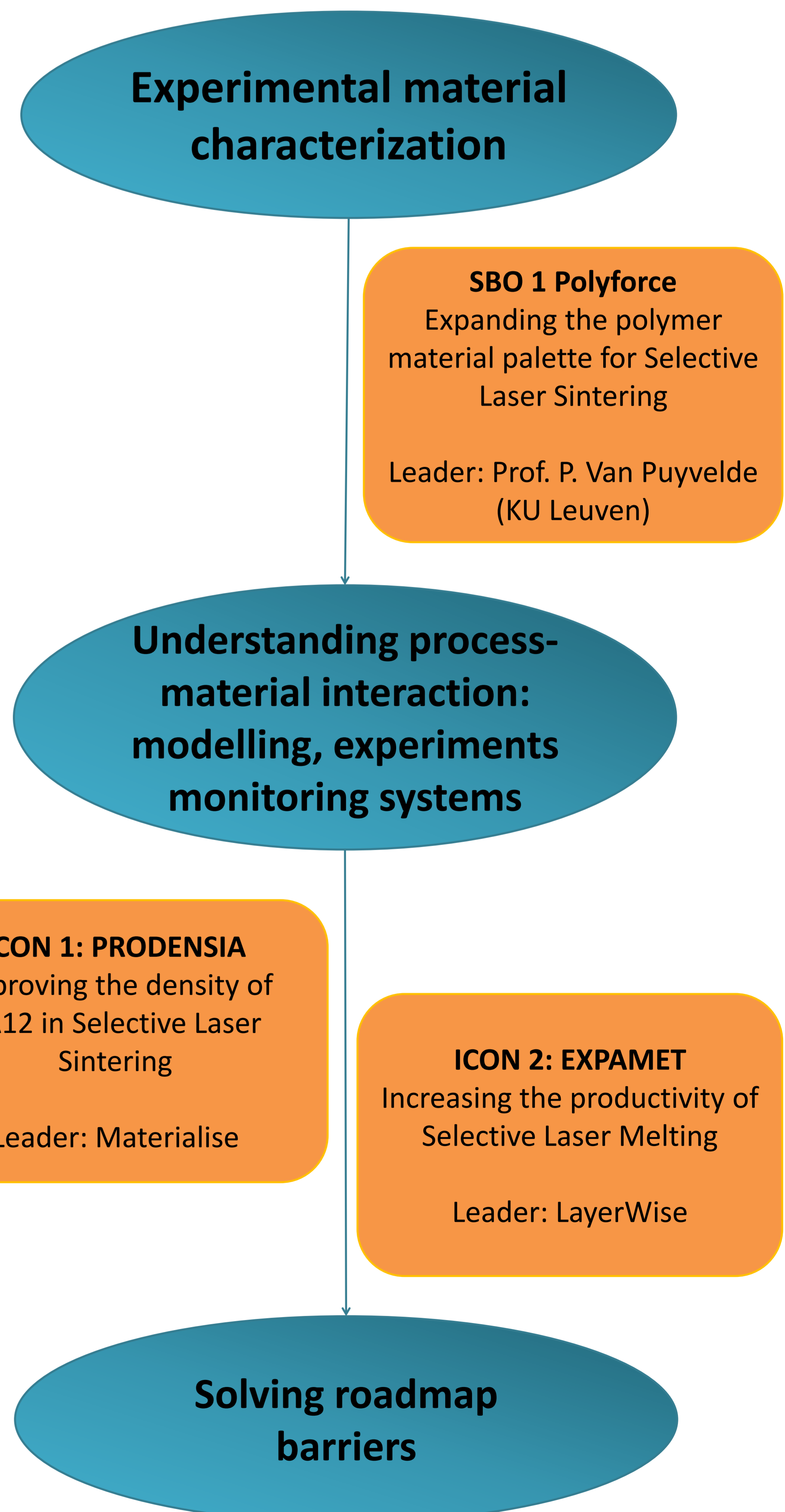
AM roadmap for Flanders



Principle: layer-by-layer addition of material, starting from 3D model

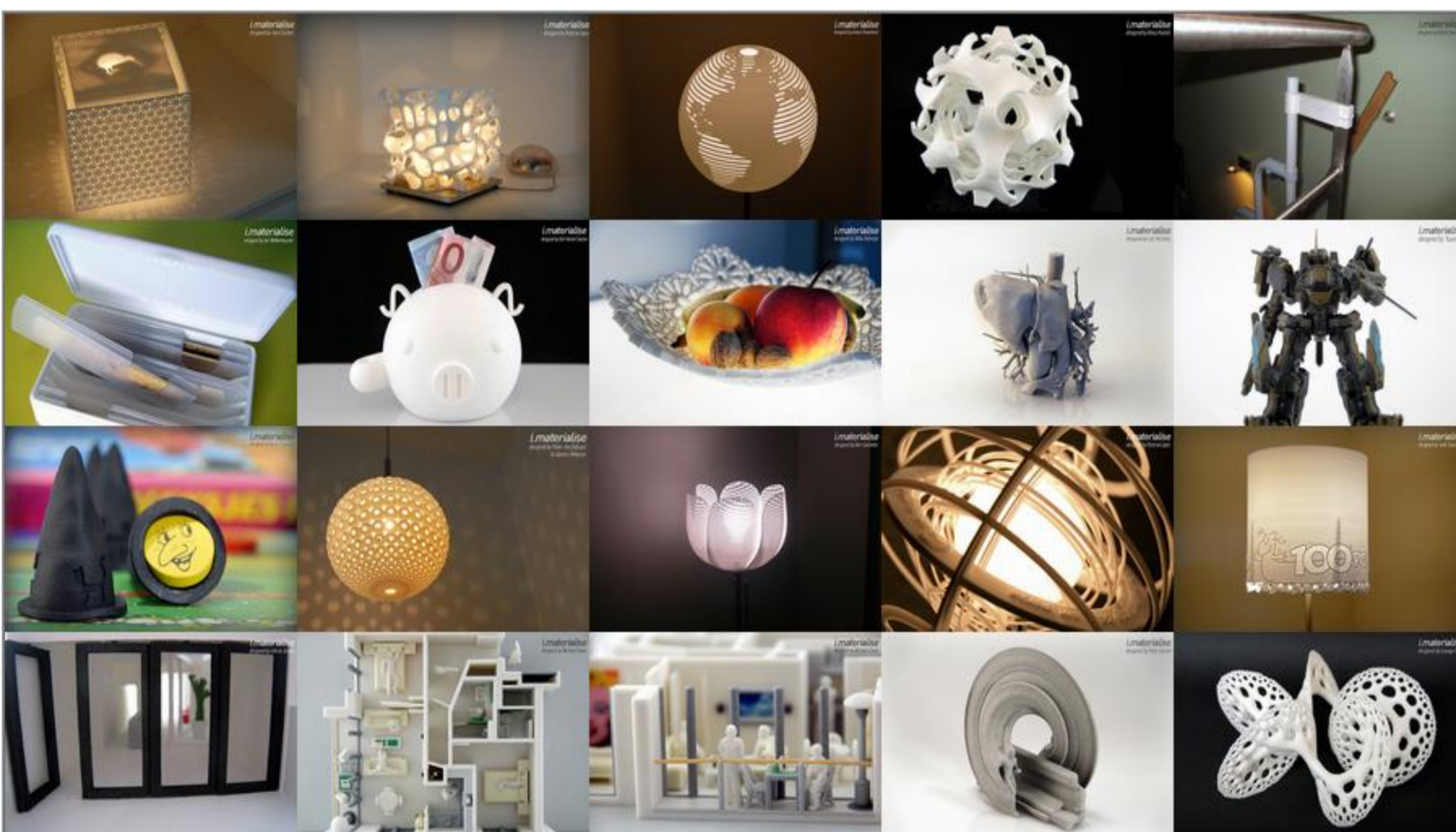


STREAM Program Roadmap



Application examples.

Currently: shift from prototyping to manufacturing!



Barriers

A. Material production

1. Low speed of material development
2. No knowledge on producing AM materials

B. AM main stream

1. Limited materials palette
2. Material properties not sufficient
3. Material properties not consistent
4. High production time
5. Product properties not sufficient
6. Recyclability

C. Machine tools

1. No fundamental understanding of effect of process parameters